

***RAPTOR* 4x4[®]**

INSTALLATION AND USE MANUAL

TONNEAU COVER HILUX REVO 2016+ DC



APPLICATIONS

VEHICLE:	YEAR/MODEL:
TOYOTA HILUX	2016+ / REVO

INDEX

1 - Introduction, Functionality and Application	02
2 - Features	02
3 - Required Tools/Equipment	02
4 - Component List	03
5 - Installation Procedure	04-05
6 - Use and Maintenance Instructions	06
7 - Warranty	06

INTRODUCTION, FUNCTIONALITY AND APPLICATION

Congratulations! You have just purchased a **Tonneau Cover**, manufactured by **Raptor 4x4**.

The tonneau cover transforms your pickup truck bed into a protected, secure, and versatile space. It provides protection against rain, sun, and dust, helps prevent theft, and even improves aerodynamics. In addition to everyday practicality, it enhances the vehicle's design by combining style and functionality.

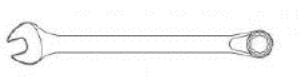
Before installing the product, please review the technical information and follow the instructions described in this manual. If you still have any questions, contact an authorized dealer.

FEATURES

The tonneau cover is the ideal accessory for those seeking protection, practicality, and style for their pickup. Made with durable canvas and a reinforced structure, its practical and secure locking system provides quick and easy access to the truck bed without complications.

Easy to install, with no need for modifications, it is a high-durability, low-maintenance product designed for daily use—perfect for those who want comfort and versatility for their pickup.

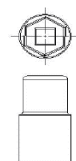
REQUIRED TOOLS/EQUIPMENT



10 mm Combination Wrench



Phillips Screwdriver

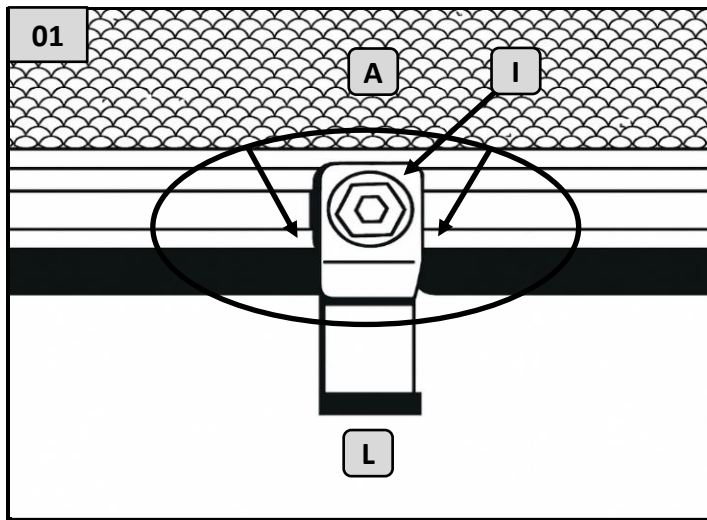


10 mm Socket Wrench

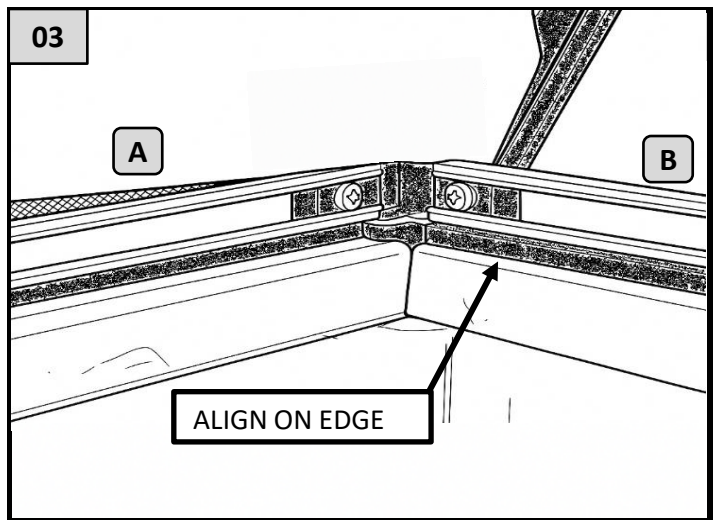
COMPONENT LIST

HILUX REVO 2016+		
ITEM	DESCRIPTION	CTT.
A	HILUX REVO CANVAS ASSEMBLY	1
B	RIGHT / LEFT SIDE ALUMINUM PROFILE ASSEMBLY	1
C	FRONT CROSSBAR ALUMINUM PROFILE	1
D	REAR CROSSBAR ALUMINUM PROFILE	1
E	CLAMP SET	6
F	OUTER CLIP	2
G	INNER CLIP WITH RIVET	2
H	HEX BOLT M6X25	2
I	HEX BOLT M6X16	2
J	WASHER M6	2
K	BLACK E.V.A. 31X1280X4 mm (Adaptation for Roll Bar)	1
L	FRONT MOUNTING BRACKET	1

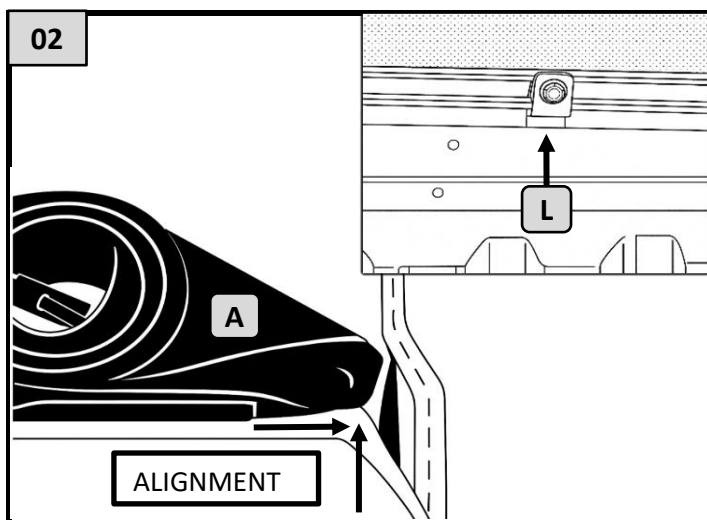
INSTALLATION PROCEDURE



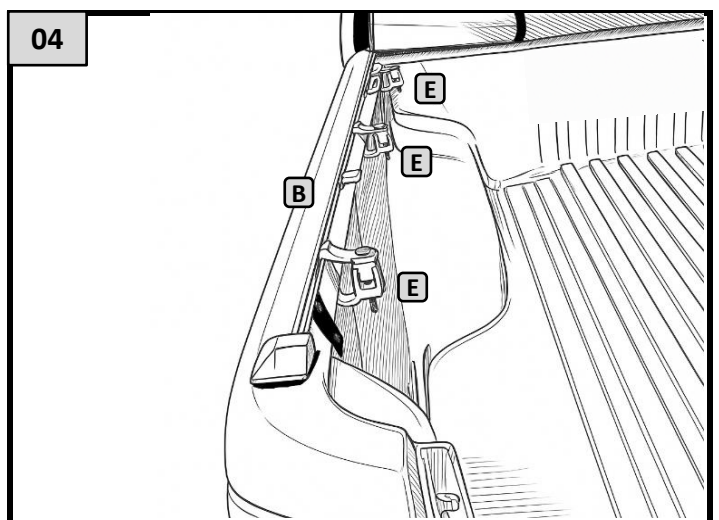
At the front area of the aluminum profile of the canvas assembly (A), cut the E.V.A. rubber already attached to the profile to fit the front mounting bracket (L), using the M6X16 screw (I).



Position the right and left side aluminum profiles (B) together with the canvas assembly (A), keeping them aligned with the inner edge of the truck bed. Finish by tightening the screws on the front profile brackets.

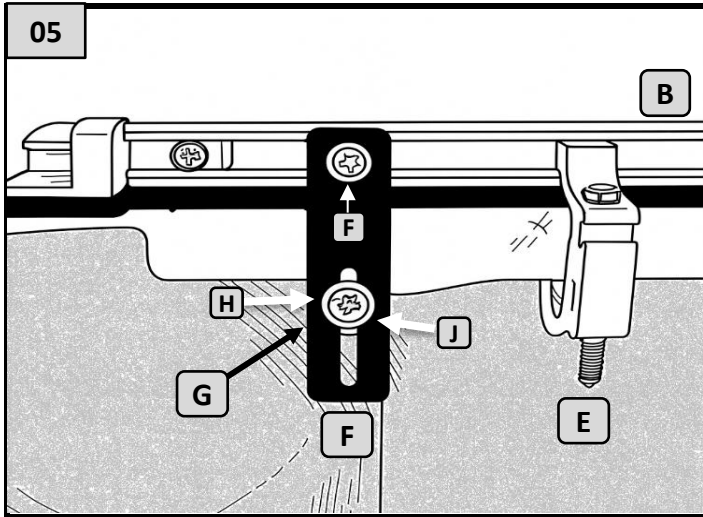


Position the canvas assembly (A) with the bracket (L) fixed at the front edge of the truck bed, aligning it with the pickup's edge.

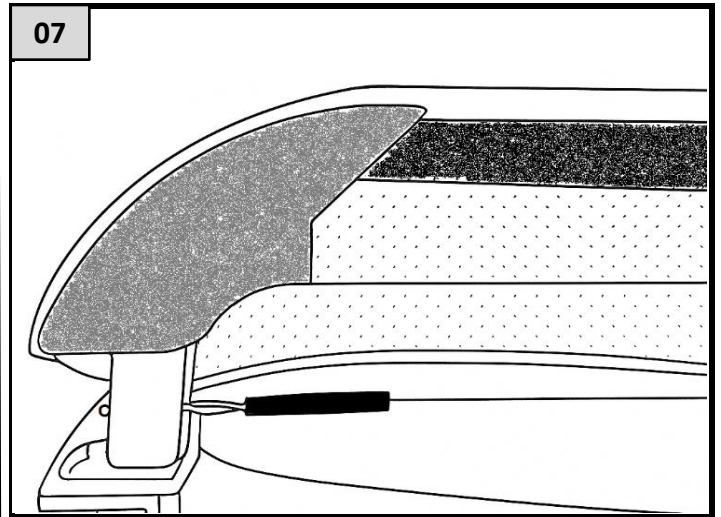


Use the clamp sets (E) to fasten the side aluminum profiles (B), with 3 clamp sets per side.

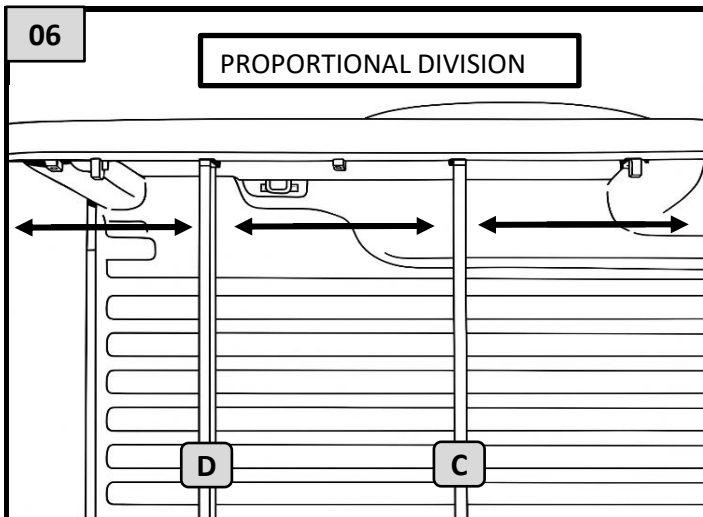
INSTALLATION PROCEDURE



Near the lower latch of the side profile (B), install the outer clip (F) with the M6X16 screw (F), and fix the inner clip (G) using the M6X25 screw (H) and washer (J).

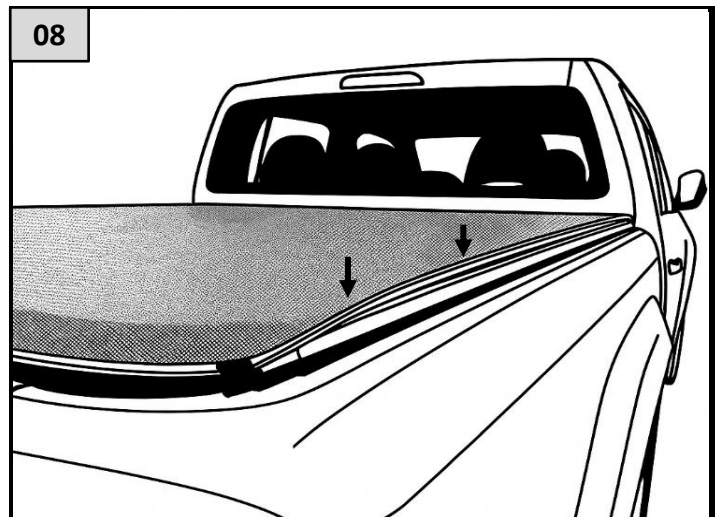


Position the locks on both sides and close simultaneously at each end of the cover. It is recommended to lubricate the locks and pins before closing.



Evenly distribute the lower ends of the side profiles (B), securing the inner screws. Then, attach the front crossbar profile (C) and the rear crossbar profile (D).

Note: Larger crossbar: front / Smaller crossbar: rear



Finish closing the cover by fitting the flexible profile onto the side profile (B).

USE AND MAINTENANCE INSTRUCTIONS

Check the package contents with the items listed in the component list.

For cleaning, use only water, neutral soap, and a sponge or soft cloth. Never use chemical or abrasive products, as their components may scratch the material's finish.

It is recommended to check and retighten the entire assembly periodically, as needed, avoiding any kind of modification or alteration to its structure.

Raptor 4x4 assumes no responsibility for any damages or issues resulting from improper installation or misuse of its products.

WARRANTY

1. This product is guaranteed by Raptor 4x4 against manufacturing defects for a period of 1 year from the date of purchase, as verified by the invoice. Repair or replacement of the device does not extend the warranty period;
2. If the product presents any defects, first contact the dealer where it was purchased;
3. The dealer or installer is responsible for analyzing the issue and, if necessary, sending the product for replacement;
4. The warranty does not cover:
 - Damage caused by incorrect installation not in accordance with the manual;
 - Defects resulting from impacts or collisions;
 - Tampered parts;
 - Parts not used for the purposes described in this manual.
5. In case of questions and/or difficulties in use, please contact your dealer.

RAPTOR 4x4[®]

Made by CNPJ 08.845.799/0001-29

BRAZILIAN INDUSTRY

